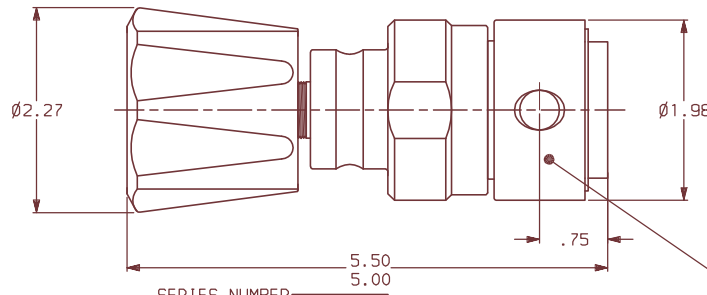
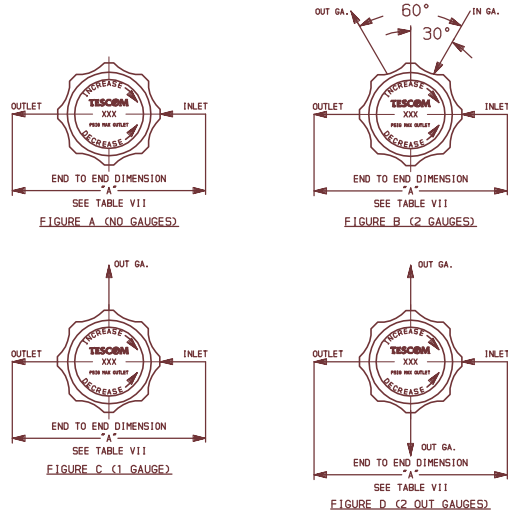
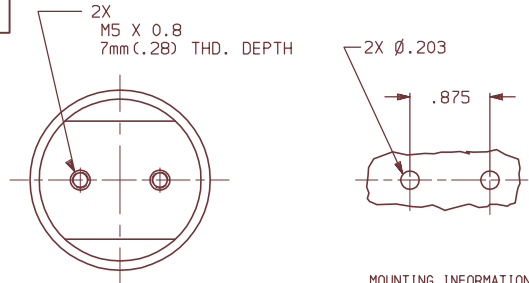


ALL DIMENSIONS REFERENCE

64-26XXXXXX



64-2662KA410

64-2600 SERIES REGULATOR

SPRING LOADED, HAND OPERATED, PRESSURE REDUCING REGULATOR WITH METAL TO METAL SEALED DIAPHRAGM, 10 R_a MICROINCH FINISH ON ALL WETTED SURFACES.

GENERAL SPECIFICATIONS.

INLET PRESSURE: SEE TABLE VI
 OUTLET PRESSURE: SEE TABLE II
 DESIGN PROOF PRESSURE: 150% OF RATED PRESSURE
 DESIGN BURST PRESSURE: 400% OF RATED PRESSURE
 OPERATING TEMPERATURE: SEE TABLE III
 LEAKAGE: INTERNAL: BUBBLE TIGHT
 EXTERNAL: <1 X 10⁻⁹ atm cc/sec. PER ASTM E449
 FLOW CAPACITY (Cv): SEE TABLE VI
 WEIGHT: APPROXIMATELY 2 LBS.

MATERIALS CONTACTING LINE MEDIA:

SEAT: SEE TABLE III
 BODY: SEE TABLE I
 DIAPHRAGM: SEE TABLE VI
 REMAINING PARTS: SEE TABLE VI

ASSEMBLY INFORMATION.

FOR ASSEMBLY OF THIS UNIT USE SPEC: A41108-01

TOOLS.

NONMETALLIC.

- (64-266KXX1X) (64-266TXX1X) (64-266VXX1X)
- (64-266KXX3X) (64-266TXX3X) (64-266VXX3X)
- 389-3572 389-3574 389-3738
- (64-266KXX2X) (64-266TXX2X)
- (64-266KXX4X) (64-266TXX4X)
- 389-3573 389-3606

REPAIR:

- (64-266KXX1X) (64-266TXX1X)
- 389-3575 389-3577
- (64-266KXX2X) (64-266TXX2X)
- 389-3576 389-3607
- (64-266KXX3X) (64-266TXX3X)
- 389-3801 389-3802
- (64-266KXX4X) (64-266TXX4X)
- 389-3804 389-3805

NOTES:

1. REGULATOR INCORPORATES AN ADJUSTABLE STOP WHICH ALLOWS THE MAXIMUM OUTLET PRESSURE TO BE LIMITED TO ANY VALUE BETWEEN THE MAXIMUM RATED VALUE AND 50% OF THE MAXIMUM RATED VALUE.
- ▲ COMPRESSION FITTINGS ARE 15 R_a FINISH.
- ▲ REGULATORS WITH VESPEL SEATS USE ELGILOY SPRINGS.
- ▲ NOT AVAILABLE WITH 3/4 TUBES OR LARGER.
- ▲ MATERIAL TO BE HASTELLOY OR EQUIVALENT PER ASTM B 574

| TABLE I | DASH NO. | BODY MATERIAL | FINISHING |
|---------|----------|---------------|-------------------------------------|
| | 6 | 316L SST VAR | ELECTROPOLISH PER SEMI F19 HP GRADE |
| | 4 | 316L SST | ELECTROPOLISH PER ASTM B 912 |

| TABLE II | DASH NO. | OUTLET PRESSURE |
|----------|----------|-----------------|
| | 0 | 0-30 PSI |
| | 1 | 0-60 PSI |
| | 2 | 0-100 PSI |
| | 3 | 0-250 PSI |
| | 6 | 0-150 PSI |

| TABLE III | DASH NO. | SEAT MATERIAL | OPERATING TEMPERATURE |
|-----------|----------|---------------|-----------------------|
| | V | VESPEL ▲ | -40°F TO +350°F |
| | K | PCTFE | -40°F TO +140°F |
| | T | TEFLON | -40°F TO +160°F |

| TABLE VII | DASH NO./FLTR | INLET & OUTLET PORT SIZE | FLOW CAPACITY (Cv) | |
|-----------|---------------|--|--------------------|-----------|
| | | | HPIC | WELD-TUBE |
| | A4 | 1/4 HPIC | --- | --- |
| | T4 | 1/4 O.D. TUBE | --- | 3.00 |
| | T6 | 3/8 O.D. TUBE | --- | 3.00 |
| | T8 | 1/2 O.D. TUBE | --- | 3.00 |
| | RG | 1/4 MALE, SWIVEL | --- | 4.50 |
| | RH | 1/4 FEMALE, SWIVEL | --- | 4.50 |
| | RK | 1/2 MALE, SWIVEL | --- | 4.75 |
| | RL | 1/2 FEMALE, SWIVEL | --- | 4.75 |
| | RA | 1/4 FIXED, MALE | --- | 3.51 |
| | SA | 1/4 FIXED, MALE | --- | 3.38 |
| | RB | 3/4 MALE SWIVEL (2450 PSI INLET MAX.) | --- | 5.65 |
| | RN | IN PORT: 1/4 MALE, SWIVEL | --- | 4.50 |
| | RO | OUT PORT: 1/4 FEMALE, SWIVEL | --- | 4.29 |
| | RR | IN PORT: 1/4 FEMALE, SWIVEL | --- | 4.50 |
| | RM | OUT PORT: 1/4 MALE SWIVEL | --- | 3.70 |
| | RT | 1/4 FEMALE, SWIVEL | --- | 3.70 |
| | RU | IN PORT: 1/4 MALE, SWIVEL (SHORT NUT) | --- | 3.70 |
| | RV | OUT PORT: 1/4 FEMALE, SWIVEL (SHORT NUT) | --- | 3.70 |
| | HM | 1/4 MALE, SWIVEL HI-FLOW | --- | 3.70 |
| | HT | 1/4 FEMALE, SWIVEL HI-FLOW | --- | 3.70 |
| | RZ | IN PORT: 1/2 FEMALE, SWIVEL | --- | 4.75 |
| | C4 | 1/4 COMPRESSION FITTING | --- | 4.97 |
| | C6 | 3/8 COMPRESSION FITTING | --- | 5.99 |
| | CB | 1/2 COMPRESSION FITTING | --- | 5.54 |
| | CU | 1/4 COMPRESSION FITTING INLET | --- | 5.48 |
| | CU | 3/8 COMPRESSION FITTING OUTLET | --- | 5.48 |
| | HU | IN PORT: 1/4 MALE, SWIVEL HIGH FLOW | --- | 3.70 |
| | HU | OUT PORT: 1/4 FEMALE FLOW | --- | 3.70 |

| TABLE V | GAUGE PORT OPTION | | | |
|---------|-------------------|--------------------|-----------------------|---------------------|
| | DASH NO. | GAUGE PORT TYPE | NUMBER OF GAUGE PORTS | GAUGE PORT LOCATION |
| | 0 | NONE | 0 | SEE FIGURE A |
| | 1 | 1/4 HPIC-A | 1 | SEE FIGURE C |
| | 2 | 1/4 HPIC-A | 2 | SEE FIGURE B |
| | 3 | 1/4 HPIC-A | 2 | SEE FIGURE D |
| | 4 | 1/4 MALE, SWIVEL | 2 | SEE FIGURE D |
| | 5 | 1/4 MALE, SWIVEL | 1 | SEE FIGURE C |
| | 6 | 1/4 MALE, SWIVEL | 2 | SEE FIGURE B |
| | 7 | 1/4 FEMALE, SWIVEL | 2 | SEE FIGURE D |
| | 8 | 1/4 FEMALE, SWIVEL | 1 | SEE FIGURE C |
| | 9 | 1/4 FEMALE, SWIVEL | 2 | SEE FIGURE B |
| | N | 1/4 TUBE STUB | 2 | SEE FIGURE B |
| | P | 1/4 TUBE STUB | 1 | SEE FIGURE C |
| | R | 1/4 TUBE STUB | 2 | SEE FIGURE D |
| | S | 1/4 FIXED, MALE | 2 | SEE FIGURE B |
| | T | 1/4 FIXED, MALE | 1 | SEE FIGURE C |
| | U | 1/4 FIXED, MALE | 2 | SEE FIGURE D |

| TABLE VI | DASH NO. | MAX. INLET PRESSURE | SPRING ▲ | DIAPHRAGM | STEM | SEAT RETAINER | VALVE GUIDE | FLOW CAPACITY |
|----------|----------|---------------------|----------|-----------|---------|---------------|-------------|---------------|
| | 1 | 3500 PSI ▲ | 316 SST | 316L SST | 316 SST | 316 SST | 316 SST | Cv = .06 |
| | 2 | 600 PSI | 316 SST | 316L SST | 316 SST | 316 SST | 316 SST | Cv = .15 |
| | 3 | 3500 PSI ▲ | ELGILOY | HASTELLOY | ▲ | 316 SST/▲ | ▲ | Cv = .06 |
| | 4 | 600 PSI | ELGILOY | HASTELLOY | ▲ | 316 SST/▲ | ▲ | Cv = .15 |

SCD: REFER TO SOURCE CONTROL TABLE CATALOG PRODUCTS

| | | |
|---|-------------------------|---|
| | | MATERIAL: X |
| HIGH PURITY CONTROLS DIVISION ELK RIVER, MN USA | | FINISH: X |
| INFORMATION CONTAINED ON THIS DOCUMENT IS THE PROPERTY OF TESCOM CORPORATION. NO RIGHTS ARE CONVEYED NOR IS PERMISSION TO DISCLOSE TO OTHERS GIVEN. | | |
| UNLESS OTHERWISE SPECIFIED: .0 ± .020 ANGLES: ±1° .00 ± .010 .000 ± .005 SURFACE ROUGHNESS: 100 CORNER & FILLET RADI: .005-.020 THREADS: CLASS 2 REMOVE ALL BURRS (X) KEY CHARACTERISTICS | | |
| CA 8-5-10 | 5513-10 | DRM BIT |
| BY 2-18-10 | 5112-10 | DRM BIT |
| BW 1-11-10 | 5026-10 | MKS BIT |
| BV 10-7-09 | 5578-09 | BIT |
| BU 1-20-09 | 5274-09 | DRM BIT |
| REV. DATE | ECO NO. | BY: APPR |
| REVISIONS | | |
| REFERENCE DRAWING(S) | | |
| DRAWING MADE IN THIRD ANGLE PROJECTION (DO NOT SCALE DRAWING) | | |
| DRAWN BY: CAG 3-14-97 CHECKED BY: DRM 3-23-97 APPROVED BY: KM 3-24-97 | | NAME INSTALLATION INFORMATION |
| SCALE: ----- CODE NO. 13669 | SIZE NUMBER C | NUMBER 64-26XXXXXX SHT. 1 OF 1 |