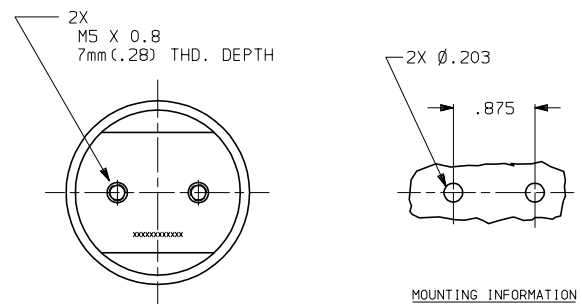
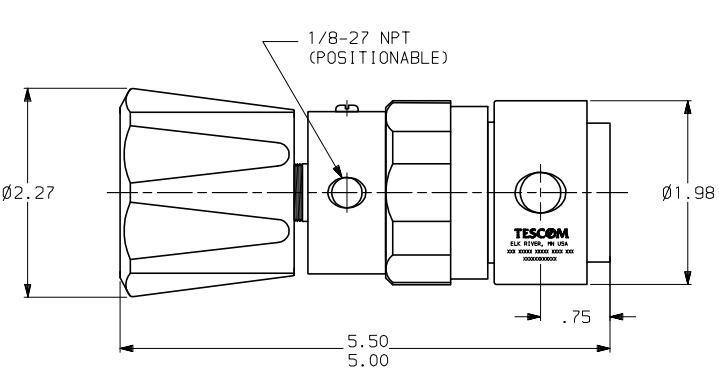
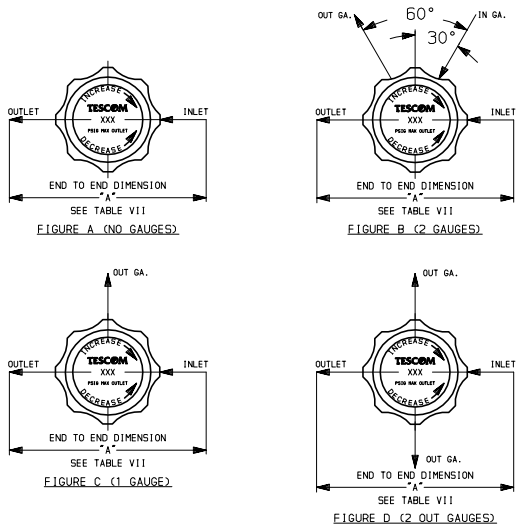


ALL DIMENSIONS REFERENCE

64-28XXXXXX



64-2800 SERIES REGULATOR

SPRING LOADED, HAND OPERATED, POSITIVE SEAL DESIGN, PRESSURE REDUCING REGULATOR WITH METAL TO METAL SEALED DIAPHRAGM, 10 Ra MICROINCH FINISH ON ALL WETTED SURFACES.

GENERAL SPECIFICATIONS:

INLET PRESSURE: SEE TABLE VI
 OUTLET PRESSURE: SEE TABLE II
 DESIGN PROOF PRESSURE: 150% OF RATED PRESSURE
 DESIGN BURST PRESSURE: 400% OF RATED PRESSURE
 OPERATING TEMPERATURE: SEE TABLE III
 LEAKAGE: INTERNAL: BUBBLE TIGHT
 EXTERNAL: 1×10^{-9} atm cc/sec. PER ASTM E449
 FLOW CAPACITY (Cv): SEE TABLE VI
 WEIGHT: APPROXIMATELY 2 LBS.

MATERIALS CONTACTING LINE MEDIA:

SEAT: SEE TABLE III
 BODY: SEE TABLE I
 DIAPHRAGM: SEE TABLE VI
 REMAINING PARTS: SEE TABLE VI

ASSEMBLY INFORMATION:

FOR ASSEMBLY OF THIS UNIT USE SPEC:
 A41271-01 -- 64-28XXXXX1X 64-28XXXXX4X
 A41271-02 -- 64-28XXXXX2X 64-28XXXXX3X

KITS:

NONMETALLIC: (64-28XXXXX1X) (64-28XXXXX4X)
 NONE AVAILABLE NONE AVAILABLE
 (64-28XXXXX2X) (64-28XXXXX3X)
 NONE AVAILABLE NONE AVAILABLE

REPAIR: (64-28XXXXX1X) (64-28XXXXX4X)
 389-3631 NONE AVAILABLE
 (64-28XXXXX2X) (64-28XXXXX3X)
 389-3632 389-3642

DASH NO.	BODY MATERIAL	FINISHING
4	316L SST	ELECTROPOLISH
5	HASTELLOY	HASTELLOY
6	316L SST	INTERNAL EP (E5500-B CLEAN)
B	316L SST VAR	INTERNAL EP (E5500-B CLEAN)SRo
V	316L SST VAR	INTERNAL EP (E5500-B CLEAN)

DASH NO.	OUTLET PRESSURE
0	0-30 PSI
1	0-60 PSI
2	0-100 PSI
3	0-150 PSI

DASH NO.	SEAT MATERIAL	OPERATING TEMPERATURE
K	PCTFE	-40°F TO +140°F
V	VESPEL	-40°F TO +350°F

DASH NO.	IN & OUT PORT TYPE	COMPATIBLE WITH:
A	HPIC	VCR/VACUSEAL
H	WELDED HI-FLOW	VCR/VACUSEAL
R	WELDED	VCR/VACUSEAL
T	WELDED	----

DASH NO./LTR	INLET & OUTLET PORT SIZE	*A ±.06 HPIC WELD-TUBE
4	1/4	3.00
6	3/8	3.00
B	1/2	3.00
G	1/4 MALE, SWIVEL	4.50
H	1/4 FEMALE, SWIVEL	4.50
K	1/2 MALE, SWIVEL	4.75
L	1/2 FEMALE, SWIVEL	4.75
A	1/4 FIXED, MALE	3.51
N	IN PORT: 1/4 MALE, SWIVEL OUT PORT: 1/4 FEMALE	4.50
Q	1/4 FEMALE, SWIVEL	4.29
R	IN PORT: 1/4 FEMALE OUT PORT: 1/4 MALE SWIVEL	4.50
M	1/4 MALE, SWIVEL	3.70
P	1/4 FEMALE, SWIVEL	5.34
T	1/4 MALE, SWIVEL	3.70
U	IN PORT: 1/4 MALE (SHORT NUT) OUT PORT: 1/4 FEMALE SWIVEL	3.70
B	1/4 FIXED, MALE	3.38
9	1/4 MALE, SWIVEL	4.65
C	1/4 FIXED, MALE	4.08
V	IN PORT: 1/4 FEMALE SWIVEL OUT PORT: 1/4 MALE (SHORT NUT)	3.70

NOTES:

- REGULATOR INCORPORATES AN ADJUSTABLE STOP WHICH ALLOWS THE MAXIMUM OUTLET PRESSURE TO BE LIMITED TO ANY VALUE BETWEEN THE MAXIMUM RATED VALUE AND 50% OF THE MAXIMUM RATED VALUE.
- VCR, REGISTERED TRADEMARKS OF SWAGelok CO. VACUSEAL, REGISTERED TRADEMARK OF PARKER HANNIFIN IN CORP.

DASH NO.	GAUGE PORT OPTION	NUMBER OF GAUGE PORTS	GAUGE PORT LOCATION
0	NONE	0	SEE FIGURE A
1	1/4 HPIC-A	1	SEE FIGURE C
2	1/4 HPIC-A	2	SEE FIGURE B
3	1/4 HPIC-A	2	SEE FIGURE D
4	1/4 MALE, SWIVEL	2	SEE FIGURE D
5	1/4 MALE, SWIVEL	1	SEE FIGURE C
6	1/4 MALE, SWIVEL	2	SEE FIGURE B
7	1/4 FEMALE, SWIVEL	2	SEE FIGURE D
B	1/4 FEMALE, SWIVEL	1	SEE FIGURE C
9	1/4 FEMALE, SWIVEL	2	SEE FIGURE B
N	1/4 TUBE STUB	2	SEE FIGURE B
P	1/4 TUBE STUB	1	SEE FIGURE C
R	1/4 TUBE STUB	2	SEE FIGURE D
S	1/4 FIXED, MALE	2	SEE FIGURE B
T	1/4 FIXED, MALE	1	SEE FIGURE C
U	1/4 FIXED, MALE	2	SEE FIGURE D
V	1/4 MALE, SWIVEL @ 12 O'CLOCK 1/4 FEMALE, SWIVEL @ 6 O'CLOCK	2	SEE FIGURE D

DASH NO.	MAX. INLET PRESSURE	DIAPHRAGM MATERIAL	WETTED PARTS MATL.	FLOW CAPACITY
1	3500 PSI	316L SST	316 SST	Cv = .06
2	1000 PSI	316L SST	316 SST	Cv = .15
3	1000 PSI	HASTELLOY	316 SST/HAST.	Cv = .15
4	3500 PSI	HASTELLOY	316 SST/HAST.	Cv = .06

SCD: REFER TO SOURCE CONTROL TABLE CATALOG PRODUCTS

 HIGH PURITY CONTROLS DIVISION ELK RIVER, MN USA		MATERIAL: X
INFORMATION CONTAINED ON THIS DOCUMENT IS THE PROPERTY OF TESCOM CORPORATION. NO RIGHTS ARE CONVEYED NOR IS PERMISSION TO DISCLOSE TO OTHERS GIVEN.		FINISH: X
UNLESS OTHERWISE SPECIFIED: .0 ±.020 ANGLES: ±1° .00 ±.010 .000 ±.005 SURFACE ROUGHNESS: 100 CORNER & FILLET RADII: .005-.020 THREADS: CLASS 2 REMOVE ALL BURRS		
DRAWN BY: JAW 10-7-96 CHECKED BY: DRM 10-8-96 APPROVED BY: KM 10-9-96		
NAME INSTALLATION INFORMATION		
SCALE: 1:1 CODE NO. 13669	SIZE NUMBER C	NUMBER 64-28XXXXXX SHT. 1 OF 1