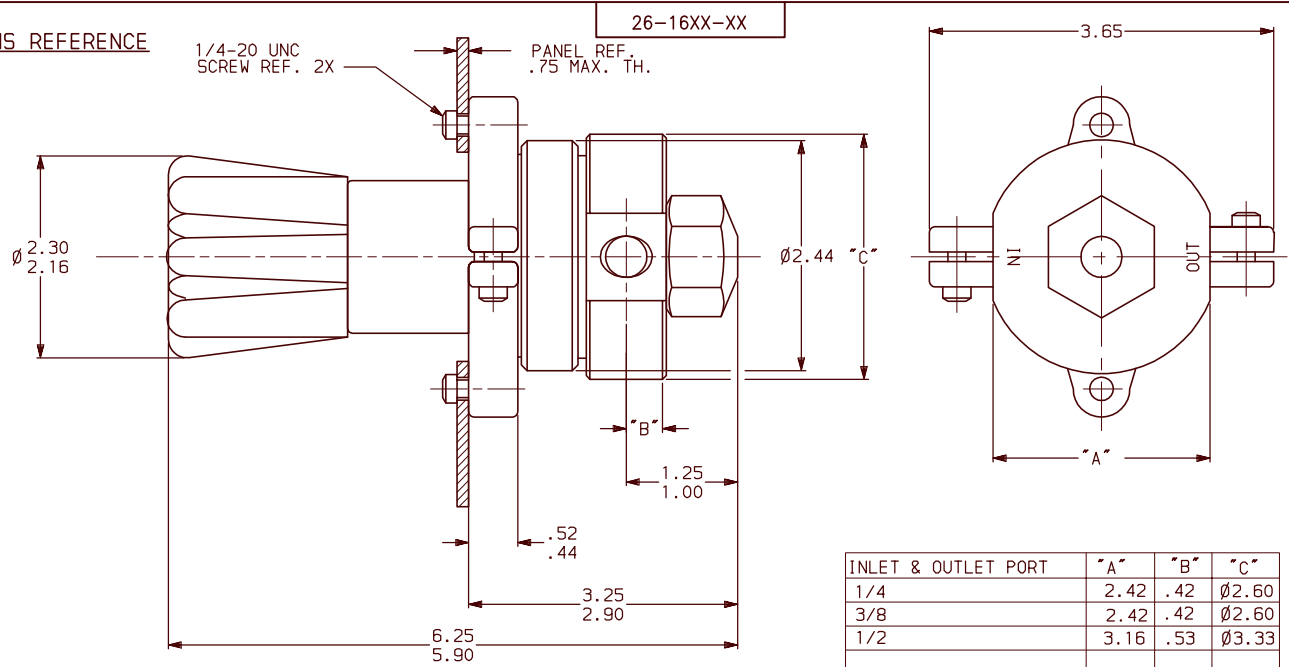


PORTING CONFIGURATION

26-1600 SERIES REGULATOR

SPRING LOADED, HAND OPERATED, PRESSURE REDUCING, WITH INTEGRAL SELF RELIEVING VENT VALVE.

ALL DIMENSIONS REFERENCE



GENERAL SPECIFICATIONS:

INLET PRESSURE: SEE TABLE I
 OUTLET PRESSURE: SEE TABLE II
 DESIGN PROOF PRESSURE: 150% OF RATED PRESSURE
 PRESSURE RATING: PER CRITERIA OF ANSI/ASME B31.3
 OPERATING TEMPERATURE: -40°F TO +165°F
 LEAKAGE: BUBBLE TIGHT
 FLOW CAPACITY (CV): .08
 WEIGHT: APPROXIMATELY 3 LBS.
 MAX. OPERATING TORQUE: 25 IN.-LBS.

MATERIALS CONTACTING LINE MEDIA:

SEAT, MAIN VALVE: CTFE
 SEAT, VENT: 15% GRAPHITE FILLED TEFLON
 O-RING: BUNA-N
 DIAPHRAGM: BUNA-N
 FILTER: 300 SERIES SST

BODY: SEE TABLE I
 REMAINING PARTS: 300 SERIES SST

ASSEMBLY INFORMATION:

FOR ASSEMBLY OF THIS UNIT USE SPEC: A41162-01

NOTES:

1. PRESSURE AT WHICH REGULATOR IS USED MUST BE COMPATIBLE WITH THE PRESSURE RATING OF THE REGULATOR AND PORT SIZE/TYPE PROVIDED.

SERIES NUMBER

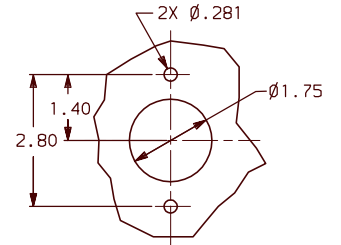
26-1662-24

TABLE I	DASH NO.	BODY MATERIAL	MAX. INLET PRESSURE
	1	BRASS	5000 PSI
	2	316 SST	6000 PSI
	3	2024-T351 ALUM.	5000 PSI
	6	316 SST	6000 PSI

TABLE II	DASH NO.	OUTLET PRESSURE
	0	0-50 PSI
	1	0-150 PSI
	2	0-250 PSI
	3	0-500 PSI

TABLE IV	DASH NO./LTR	INLET & OUTLET PORT SIZE
	4	1/4
	6	3/8
	8	1/2 SST BODY ONLY

TABLE III	DASH NO.	IN & OUT PORT TYPE
	1	SAE
	2	NPT
	3	MS33649



PANEL CUT-OUT

<p>TESCOM CORPORATION INDUSTRIAL CONTROLS DIVISION ELIX RIVER, MN USA</p>			
<p>INFORMATION CONTAINED ON THIS DOCUMENT IS THE PROPERTY OF TESCOM CORPORATION. NO RIGHTS ARE CONVEYED NOR IS PERMISSION TO DISCLOSE TO OTHERS GIVEN.</p>			
<p>UNLESS OTHERWISE SPECIFIED: .0 ± .020 ANGLES: ±1° .00 ± .010 .000 ± .005 SURFACE ROUGHNESS: 100/ CORNER & FILLET RADI: .005-.020 THREADS: CLASS 2 REMOVE ALL BURRS</p>			
<p>REV. DATE ECO NO. BY: APPR</p>			
<p>REVISIONS</p>			
<p>REFERENCE DRAWING(S)</p>			
<p>DRAWING MADE IN THIRD ANGLE PROJECTION (DO NOT SCALE DRAWING)</p>			

MATERIAL: <u> </u>		
FINISH: <u> </u>		
DRAWN BY: JLS	CHECKED BY: JLS	APPROVED BY: JLS
NAME INSTALLATION INFO.		
SCALE: 1:1	SIZE NUMBER C	26-16XX-XX
CODE NO. 13669	SHT. 1	OF 1