

CONFIDENTIAL: This document/program, including the content, is property of Emerson Process Management and must be held in strict confidence and properly safeguarded by the recipient at all times. It may not be copied or reproduced, or provided or revealed to any other part, except with prior authorization of an appropriate officer of Emerson Process Management and any authorized copy or reproduction must include this admonition. The recipient may use the same only for the purpose for which Emerson Process Management has provided it to the recipient. The document must be returned to Emerson Process Management upon request. By accepting this document/program, the recipient agrees to the foregoing.

ER5 05 0 S I -1

BASIC SERIES	BASE STYLE	INTERNAL SENSOR CONFIG.	BOARD CONFIG.	CURRENT VOLTAGE	Cv CONFIG.
ER5	05 - ALUM. HAZLOC	0 - 0-100 PSIG	S - STANDARD SETPOINT FEEDBACK	I - 4-20 mA 1-5 VDC	1 - STANDARD Cv = 0.01
			F - 2 EXTRA ANALOG INPUTS/OUTPUTS	V - 0-10 VDC	
INCLUDES MAIN CABLE ASSEMBLY					-----
INCLUDES ABOVE PLUS: ADAPTOR FITTINGS, USER START UP CD KIT					

ER5050 HAZLOC PRESSURE CONTROLLER

CERTIFICATIONS: CSA, IECEx, ATEX, CE  
SEE LABEL FOR DETAILS

ELECTRICAL

POWER REQUIREMENT: 20.5 TO 28.5 VDC, 340mA MAX., 180mA NOMINAL

SUPPLY

MEDIA: CLEAN, DRY INERT GAS OR CLEAN, DRY AIR  
PRESSURE: MIN.: OUTPUT PRESSURE + 1 PSIG, MAX. 110 PSIG  
TEMP.: -4°F TO 140°F (-20°C TO 60°C) (DRY MEDIA REQUIRED BELOW 32°F)

ACCURACY:

LINEARITY: ±0.05% FULL SCALE OUTPUT (FSO)  
HYSTERESIS: ±0.05% (FSO)  
REPEATABILITY: ±0.05% (FSO)  
RESOLUTION SENSITIVITY: ±0.03% (FSO)  
MEASURED REFERENCE ACCURACY (TOTAL ACCURACY ALL EFFECTS INCLUDING ZERO AND SPAN ERROR): ±0.10% (FSO)  
TEMPERATURE EFFECT: ±0.0125% / DEGREES F OF FSO (-20°F TO 170°F)  
±.0069% / DEGREES C OF FSO (-30°C TO 75°C)  
LOW PRESSURE CAPABILITY WITH EXTERNAL TRANSDUCER:  
±0.25 INCHES WATER (.635 g/sq. cm) INTO 2 LITER VOLUME

FLOW CAPACITY

Cv=0.01 (MAX. FLOW: 18 LPM)

WEIGHT

ER5050: 42 oz. (1.2 kg)

FLOW STREAM MATERIALS

SOLENOIDS: NICKEL PLATED STEEL, VITON SEAT AND O-RINGS  
SENSOR: GLASS, CERAMIC, SILICON, RTV, NICKEL  
TUBING: POLYURETHANE  
PLUG: BRASS  
O-RINGS: BUNA-N, VITON  
BODY: ALUMINUM

STORAGE TEMPERATURE: -58°F TO 200°F (-50°C TO 95°C)

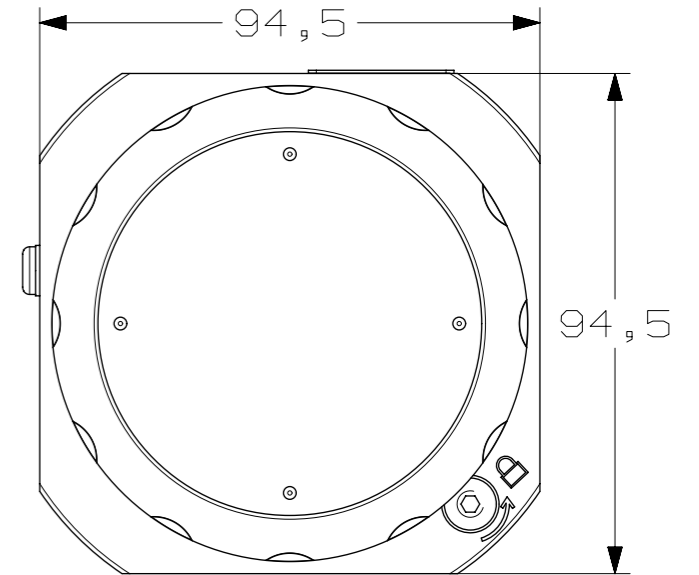
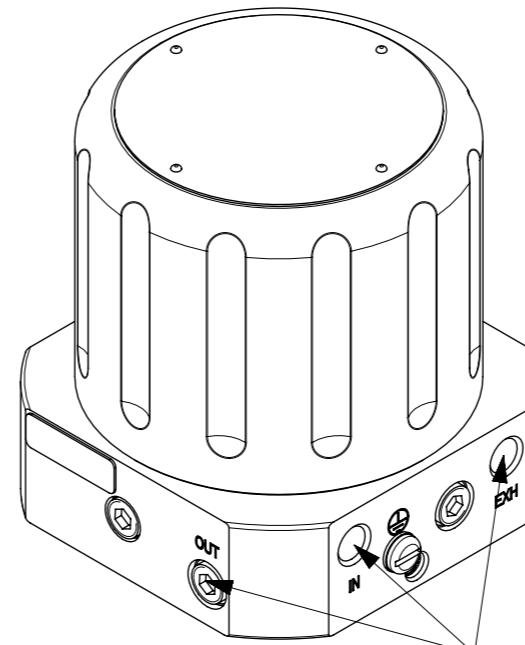
ASSEMBLY INFORMATION

FOR ASSEMBLY OF THIS UNIT: SEE PAGE 2:2

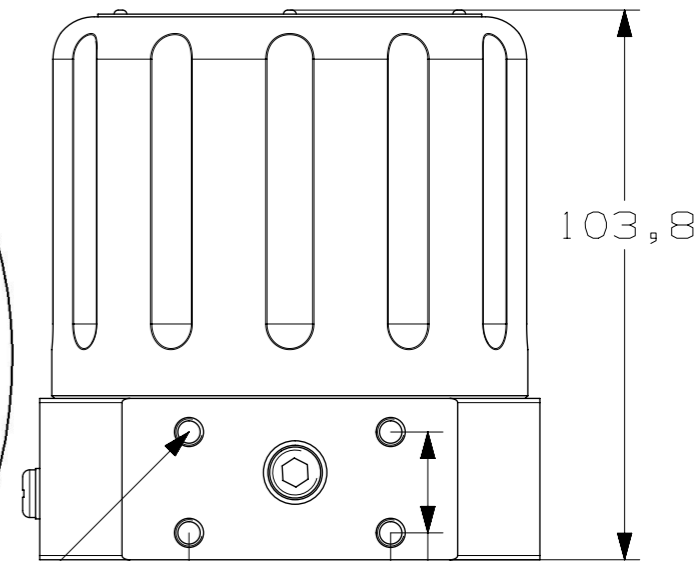
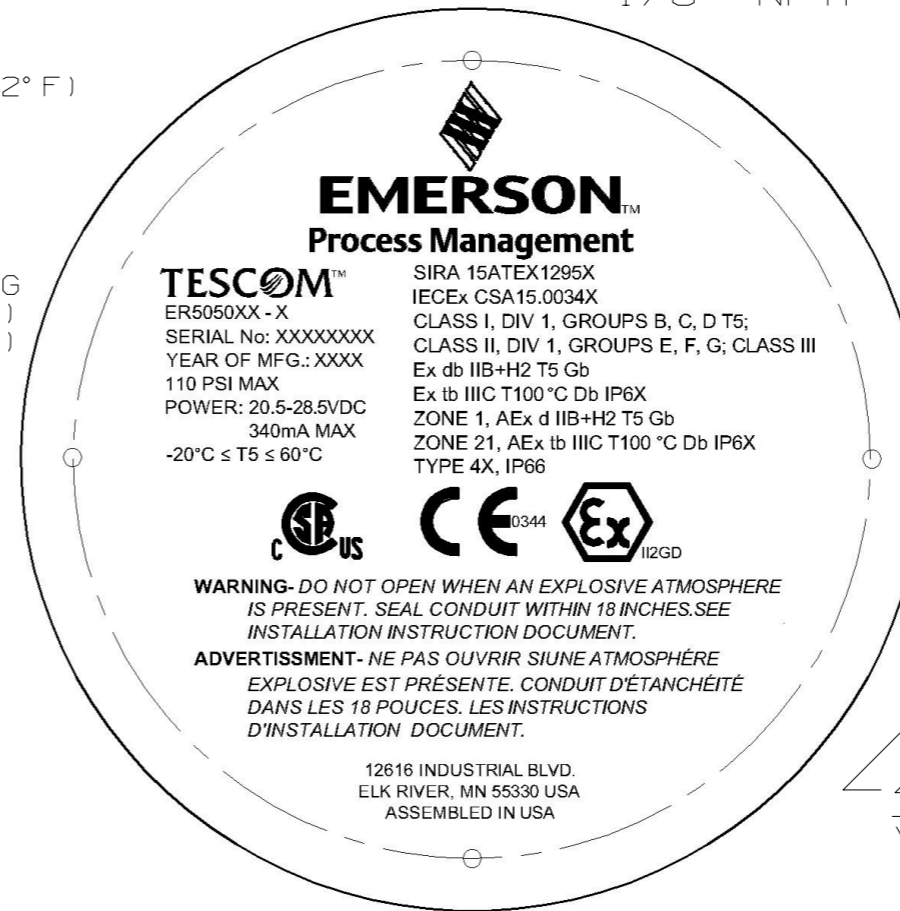
NOTES:

- ALL DIMENSIONS REFERENCE.
- THREAD PROTECTORS, CABLES, AND FITTINGS HAVE BEEN EXCLUDED FROM THE DRAWING.
- SOFTWARE DISK NOT SHOWN

SOURCE CONTROLLED HAZLOC



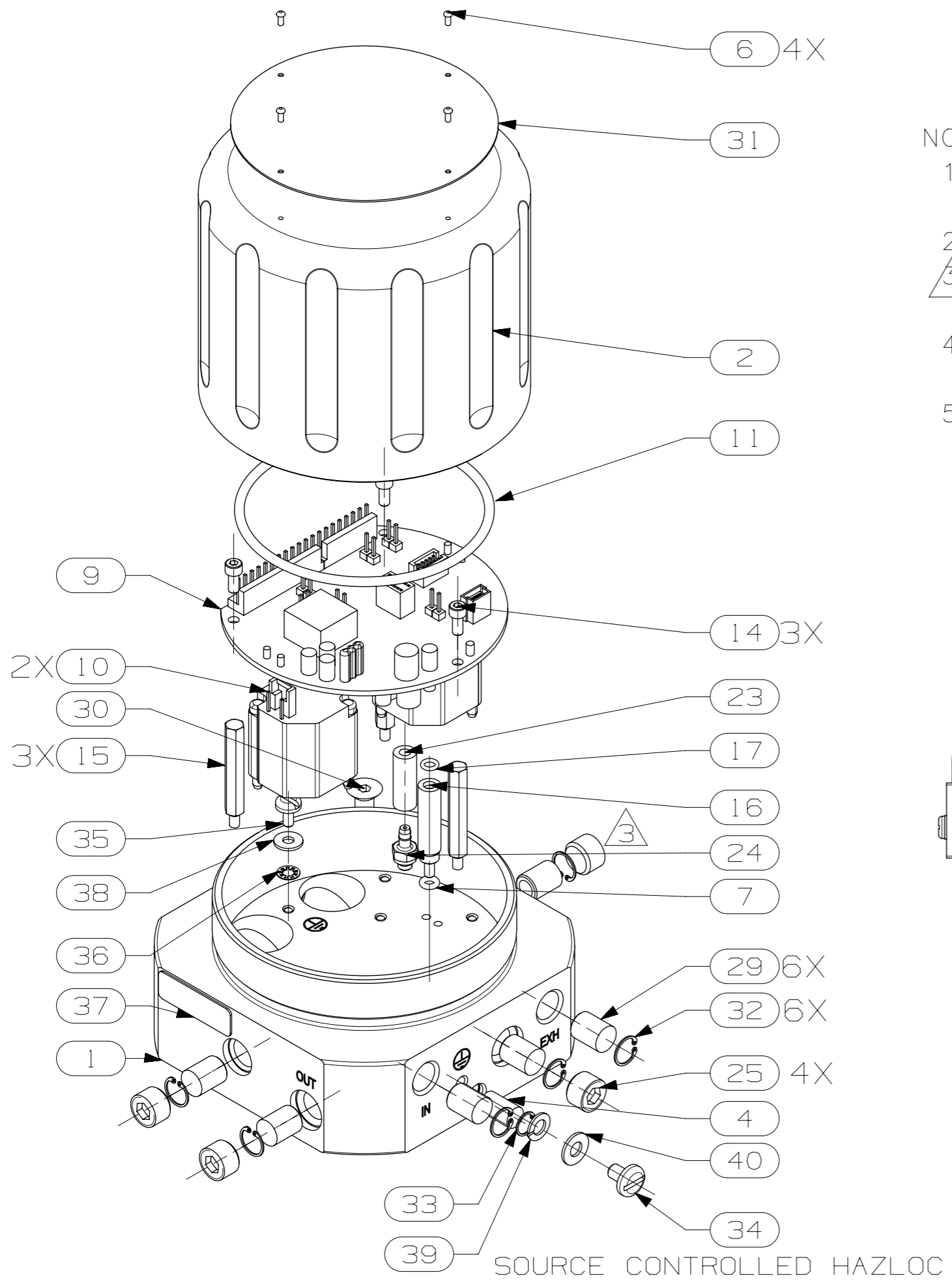
1/8" NPTF



4X M5X0.8 MOUNTING HOLES  
∇11 MM THREAD

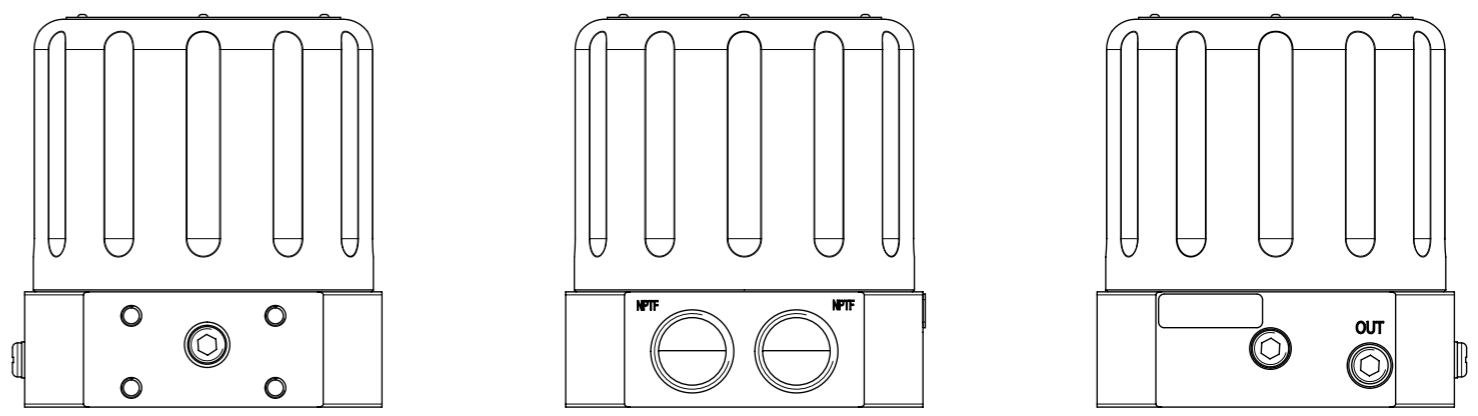
UNLESS OTHERWISE SPECIFIED TOLERANCE: ± 0.25 ANGLES: ± 1° SURFACE FINISH: 2.5 Ra BREAK SHARP CORNERS: 0.5MAX DO NOT SCALE THIS DWG		 <b>EMERSON</b> Process Management © 2015 2015 UNITS: MILLIMETERS ASME Y14.5M DWG STATUS:		PRESSURE CONTROLLER ER5050	
REVISION		PROJECT:		SHEET: 1 OF 2	
E CRN NO 51177-15		DWN jrenolle 15-Jul-2014		SCALE: 1:1	
CHANGES -		CHK enemann 15-Jan-2015		DRAWING	
APV BY jrenolle 15-Sep-2015		APV jrenolle 15-Jan-2015		REV	
				ER5050	
				AA	

CONFIDENTIAL: This document/program, including the content, is property of Emerson Process Management and must be held in strict confidence and properly safeguarded by the recipient at all times. It may not be copied or reproduced, or provided or revealed to any other part, except with prior authorization of an appropriate officer of Emerson Process Management and any authorized copy or reproduction must include this admonition. The recipient may use the same only for the purpose for which Emerson Process Management has provided it to the recipient. The document must be returned to Emerson Process Management upon request. By accepting this document/program, the recipient agrees to the foregoing.



NOTES:

1. APPLY CHRISTO-LUBE MCG 111 TO ALL O-RINGS (SOURCE CONTROLLED LUBRICANT PER ERAA10010).
2. LABEL BRUSHED SIDE UP.
3. NPT PLUG ON EXTERNAL MOUNTING SIDE MUST NOT EXTEND BEYOND THE SURFACE OF THE BASE.
4. THREAD PROTECTORS ONLY IN 1/8" NPT PORTS AND IN DOME LOAD PORT.
5. PERFORM ROUTINE 165PSI LEAK TEST (REQUIRED BY HAZLOC) AND THEN UNIT TEST.



UNLESS OTHERWISE SPECIFIED TOLERANCE: ± 0.25 ANGLES: ± 1° SURFACE FINISH: 2.5 Ra BREAK SHARP CORNERS: 0.5MAX DO NOT SCALE THIS DWG		 © 2015 2015	ASSEMBLY ER5050	
REVISION   ECRN NO   51177-15   UNITS: MILLIMETERS   DWN   jrenolle   15-Jul-2014   DRAWING   REV   CHANGES   _   ASME Y14.5M   CHK   enemann   15-Jan-2015   ER5050   AA APV BY   jrenolle   15-Sep-2015   DWG STATUS:   APV   jrenolle   15-Jan-2015			PROJECT:	SHEET: 2 OF 2